

# Lehigh Valley Greenways Conservation Landscape SUCCESS STORY

By: Lehigh Valley Planning  
Commission  
Lvpc.org  
(610) 264-4544

## Advance Environmental Regulation Program (2011)

### SUMMARY

The Lehigh Valley Planning Commission released updated model floodplain regulations in advance of Northampton County communities receiving new Flood Insurance Rate Maps (FIRMs) in the summer of 2014. These model regulations serve as a guide to inform municipalities that may be required to change floodplain management ordinances.

### FUNDING

**Grant Award:**  
**\$15,000**

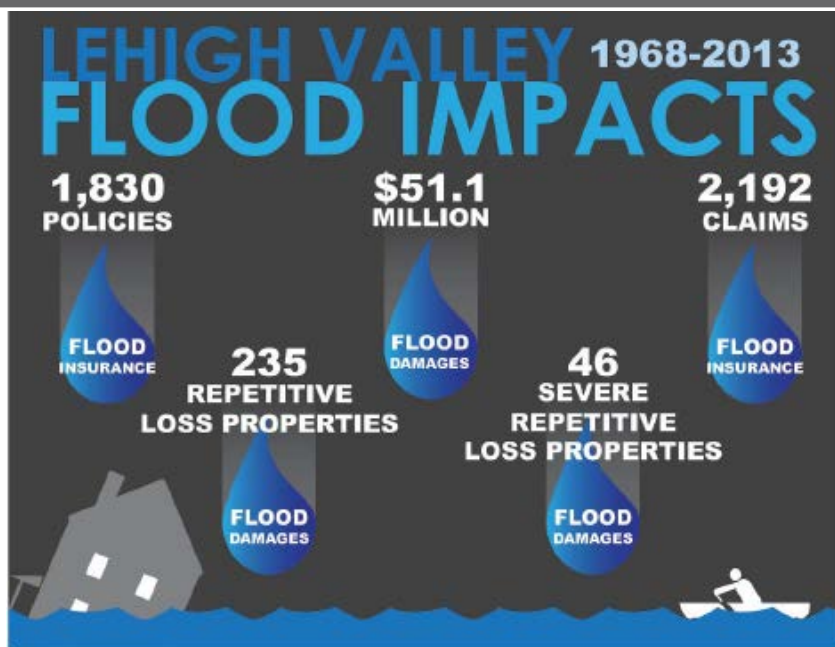
**Match:**  
**\$21,300**

**Total Project Cost:**  
**\$36,300**

### PARTNERSHIP IS KEY

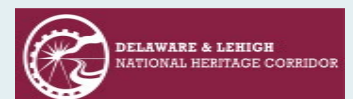
LVPC Comprehensive Planning  
and Environment Committees

PA Department of Community  
and Economic Development



### CHALLENGE

LVPC last published model floodplain regulations in 2007, in response to the impacts of flooding in 2006 and 2007. Since then, there have been numerous flooding events, significant changes to the National Flood Insurance Program (NFIP), new floodplain maps in Northampton County, and an update to the Regional Hazard Mitigation Plan. These model regulations serve to reflect these recent changes.



## SOLUTION

Updated model regulations were written by LVPC using the policies of the 2005 Regional Comprehensive Plan, the 2013 Regional Hazard Mitigation Plan, the updated 2012 DCED floodplain provisions and the 2013 NFIP Community Rating System Coordinator's Manual as guides. Adopting higher standards to reflect the changing conditions of the Lehigh Valley will prove to reduce flood risk and the cost of potential flooding.

## RESULTS

Model ordinances were presented to planning committees during workshops, planning meetings, and included in implementation strategies. The intention is to incorporate these recommendations into future planning efforts and land-use discussions.

### Contact



[www.LVgreenways.org](http://www.LVgreenways.org)

#### Claire Sadler, Dir. Trails & Conservation

Delaware & Lehigh National Heritage  
Corridor

2750 Hugh Moore Park Road  
Easton, PA 18042

610-923-3548 ext. 226

[Claire@delawareandlehigh.org](mailto:Claire@delawareandlehigh.org)

[www.delawareandlehigh.org](http://www.delawareandlehigh.org)

#### Diane Kripas, Division Chief

PA DCNR Bureau of Recreation and  
Conservation

717-772-1282

[dkripas@pa.gov](mailto:dkripas@pa.gov)

[www.dcnr.state.pa.us/cli](http://www.dcnr.state.pa.us/cli)

